



Case Study: Transforming Language Learning and Interpretation at Princess Nourah bint Abdulrahman University with SmartClass

Background and Scope

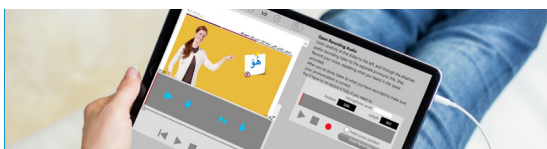
Princess Nourah bint Abdulrahman University (PNU), the largest all-female university in the world, serves approximately 40,000 students in Riyadh, Saudi Arabia. In 2017, PNU's College of Languages sought an advanced solution to enhance its Translation Department, specifically to improve students' interpretation techniques. Traditional interpretation testing was a time-consuming challenge, requiring days of evaluation by instructors. Seeking to modernize and streamline this process, the university turned to SmartClass, introduced through a local Robotel partner and distributor.

Identifying the Need

PNU faced a major obstacle in assessing students' interpretation skills. Traditional testing methods demanded extensive instructor effort and prolonged grading periods. The university required a solution that would:

- Reduce the time and effort required for interpretation assessments.
- Enhance students' proficiency across all four language domains: Reading, Writing, Listening, and Speaking.
- Provide a scalable and user-friendly platform adaptable to various language programs.

Why SmartClass?



After evaluating multiple solutions, PNU chose SmartClass for its ability to address these challenges efficiently. The SmartClass Live testing and Simultaneous Recording activities revolutionized interpretation assessments, reducing evaluation time from days to mere minutes. Additionally, SmartClass was selected due to:

- **Ease of Use:** Teachers quickly adapted to the intuitive platform, seamlessly integrating it into their curriculum.
- **Time-Saving Capabilities:** Automated grading and simultaneous student recordings streamlined the assessment process.
- **Versatility:** The platform supports multiple languages, including French, Chinese, and English, accommodating diverse language instructors.
- **Engaging Learning Environment:** Interactive activities keep students motivated, improving both test scores and real-world language application.

Implementation and Expansion

PNU initially implemented three state-of-the-art SmartClass language labs, each equipped with 24 student stations, totaling 72 licenses. As the benefits became evident, instructors expanded the use of SmartClass beyond interpretation assessments, incorporating it into general language proficiency training across all four domains. The university has since recognized the transformative impact of the solution and has requested an additional two labs with 50 more licenses to further enhance their language programs.

Impact and Results



The adoption of SmartClass has significantly improved both teaching efficiency and student performance at PNU:

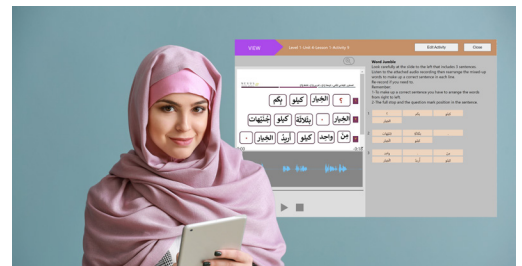
- **Enhanced Interpretation Training:** Teachers can now evaluate students' simultaneous interpretation skills in real-time, dramatically reducing assessment time.
- **Greater Student Engagement:** The interactive platform fosters increased student participation, leading to higher confidence and competence in language use.
- **Scalability for Future Growth:** The university's interest in expanding SmartClass labs underscores the system's effectiveness and long-term value.

“SmartClass has revolutionized my approach to interpretation testing, making it not just faster but also more insightful. I highly recommend it to any educator looking to enhance their assessment process while saving precious time!”

- Quote Source

“SmartClass provides a comprehensive platform that integrates interactive activities tailored to each domain. The engaging content and varied exercises keep my students motivated and eager to learn. I've noticed that they're not just improving their test scores; they're also gaining confidence in using the language in real-life situations.”

- Ms. Maram Abd Alabdulaaly



Conclusion

The success of SmartClass at PNU serves as a model for other universities seeking to modernize language instruction. By streamlining assessments, engaging students, and accommodating multiple languages, SmartClass has proven to be an invaluable tool for language educators. As more institutions look to enhance their language programs, PNU's experience stands as a compelling case for SmartClass as the premier solution for effective and efficient language learning.